

Aluminium Bodied Utility Vehicle

Small lightweight municipal duty vehicle

The ABUV Aluminium Bodied Utility Vehicle is the latest development in innovative waste collection vehicle solutions from Terberg Matec UK Ltd. The new addition is the product of a new focus by Terberg to develop a breed of mini-recycling and waste collection vehicles.

The ABUV vehicle is small in stature but big on performance & efficiency, paying homage in its design features to some of Terberg's range of larger specialist recycling vehicles & maintaining Terberg's ethos of exceptional build quality & reliability.

Purpose-built to perform a range of collection duties, the diminutive design allows easy access to almost any location and is capable of receiving waste by hand or by wheeled bins up to 360 litre capacity.

The ABUV features include;

•flexible and multi-tasking;

ideally suited to a range of activities, the ABUV lends itself to street cleansing, litter collection, 'missed bin' collection, green waste collection and other municipal duties.

•lightweight engineering;

the ABUV has been designed from the ground up to keep the weight down. From chassis selection to body design through to hydro-electric components, all aspects of the ABUV were developed with low weight in mind.

This weight conscious engineering process gives maximum payload from a compact and lightweight solution, with a body volume of 10 cu.m, combined with a typical payload of 820 kgs.

•aluminium body;

the main body of the ABUV is constructed from extruded aluminium profiles and sheeting, all of which help the ABUV achieve its generous payload.

•tipping as standard;

fitted with underfloor tipping gear, the ABUV is a cinch to discharge, the manually locked rear door is top hung and simply swings out of the way during load discharge.

•loading hatch ;

optional side-mounted sliding door allows manual loading of the body with bagged or loose materials

•simplified controls;

the ABUV control system is surprisingly simple, designed with the user in mind, the controls allow safe operation of the equipment. Each control panel brings with it the benefit of tried and tested control panels ensuring that the end result is reliable and robust

•licenced for all;

being built onto a 3.5 tonne chassis means that finding a driver with the correct driving licence is no longer a problem for busy transport managers.

•wash your hands;

the handwash unit fitted to the offside ensures that hands can be kept clean during collection duties, reducing the risk of infection

•supported by Terberg Service and Warranty;

the ABUV vehicle is available with a range of warranties and after-sales support packages.

•if you would like to see the ABUV for yourself....

please do not hesitate to contact Terberg Sales on 01925 283915 who will arrange for you to see the ABUV for yourself.



the nearside single chair lifter is designed for purpose and engineered with low weight in mind, but still robust enough to cope with the everyday demands of a busy collection route. An optional, removable aluminium trough is available.



The lifter and body controls are based on those used on Terberg's full size product range.

A proven safe and robust control system designed for maximum efficiency and ease of use

Rev:2 July 2007

We reserve the right to change the specification of our equipment at any time without prior notification

Aluminium Bodied Utility Vehicle

Small lightweight municipal duty vehicle



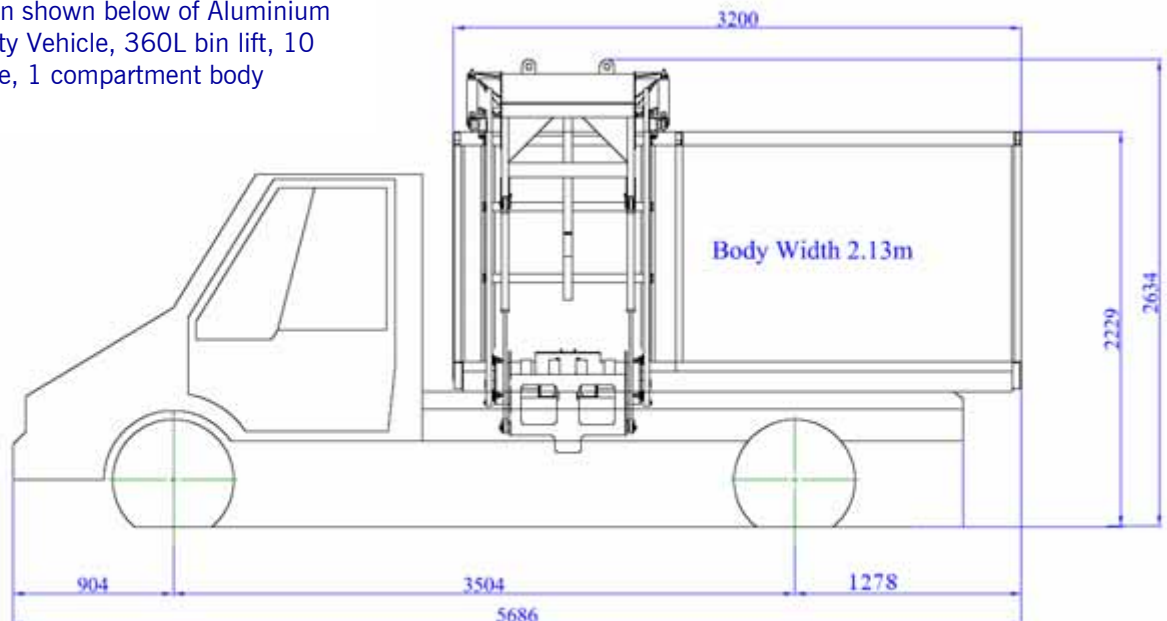
vehicle type	approx. volume	chassis	wheel base	GVW	O/A L	O/A W	payload kgs	config	no. of cmpts	side mounted sliding doors	smooth body kit	Removable Aluminium trough
ABUV	10	Ford Transit 350MWB	3504	3.5	5686	2200	820*	4 x 2	1	●	●	●
	10	Renault Master 120.35CC	3578	3.5	5642	2200	960*	4 x 2	1	●	●	●
	10	Iveco ML75E18K	3105	7.5	5600	2200	2900*	4 x 2	1	●	●	●

KEY: ●-option ○-not available

Other options available: caged body | customer livery including decals | extended warranties | full maintenance

* payload figure for ABUV with 1 body compartment

Configuration shown below of Aluminium Bodied Utility Vehicle, 360L bin lift, 10 cu.m volume, 1 compartment body



3.5 GVW Based On A 350 MWB DRW, 2.4TD 90 PS/115 PS
 All Tyres:- 185/75 R16 Single Tyres Front, Double Tyres Rear

Rev:2 July 2007

We reserve the right to change the specification of our equipment at any time without prior notification